

Solstice & Sky Body Adjustments

SKY



Solstice & Sky Body Adjustments

Solstice & Sky Body Adjustments.....	1
Condition: The deck lid gap is not equal from side to side to fender (gap 1.5 – 3.0 mm)	3
Condition: The deck lid is too low or high in the opening as measured at the quarter panel (gap -2.0 to + 2.0 mm) and the deck lid is not flush at the tail lamp area	5
Condition: One side of the deck lid is too low or high in the opening as measured at the quarter panel, the deck lid is flush at the tail lamp area and the other side is sub-flush to the quarter panel (gap -2.0 to + 2.0 mm).	7
Condition: Tail lamp to deck lid not flush (gap 1.0 mm) or the gap between the deck and lamp is tight or excessive.	9
Condition: Rear Fascia flushness is high or low to the deck lid.....	11
Condition: Pontiac Rear Fascia to tail lamp fit – Slight dip in fascia at tail lamp.....	14
Saturn	15
Condition: Saturn rear fascia to deck lid adjustments	15
Condition: Saturn or Pontiac front of deck lid to quarter not flush (buttress latched).....	17
Hood Measurements	18
Condition: The hood sits higher or lower than the top of the door.....	19
Condition: The hood to door gap is excessive or tight as measured at the middle of the door (gap parallel < 2.0 mm and min of 3.5 mm).....	20
Condition: The hood to fender gap is excessive or tight	20
Fascia to Hood Adjustments	21
Condition: The hood to fascia gap is not equal from side to side (never less than 3 mm)	21
Condition: The hood to fascia gap is good side to side but low or high between the head lamps.....	21
Condition: The hood to fascia gap is good side to side but low or high between the head lamps.....	22
Fascia to Hood Fit by Head Lamp and in Front of Tire.....	23
Condition: The fascia is sticking out at the hood in the head lamp area	23
Front Fender Adjustment – Pontiac	24
Condition: The front fender is not flush at the hood.....	24
Rear Fascia Ding in Fascia from Inside Out.....	25
Condition: The rear fascia has up-dings from the inside out.....	25

NOTE: Always mark bolts and brackets before making any adjustments

Condition: *The deck lid gap is not equal from side to side to fender*
(gap 1.5 – 3.0 mm)

There are two different ways to adjust the deck lid in the opening



Raise or lower the wedge bumper. If you raise one side to increase the gap, you need to lower the opposite side to close the gap



The second way to adjust the side to side gap is to loosen the deck hinge bolts and move the hinge out towards the tight side. This will force the deck in the opposite direction and increase the gap. If you do this adjustment, check the deck bumper.



After the adjustments are made, make sure the deck lid is tight in the opening. Look for side to side movement, there should not be any movement.



Condition: The deck lid is too low or high in the opening as measured at the quarter panel (gap -2.0 to + 2.0 mm) and the deck lid is not flush at the tail lamp area

First you need to check is the flushness of the deck to quarter at the tail lamp area. This must be flush before any adjustments are made.



If this is not flush, you need to adjust the deck lid by loosening the rear deck hinge bolt. The deck lid will pivot off the front bolt to raise or lower the deck.



With the rear bolt loose and the front bolt snug, if you are high at the tail lamp, pull down on the deck lid to lower the deck lid. If high at the tail lamp, pull the deck lid up to lower the deck.



Remember: Always mark the bolts before making any adjustments. If you get lost, you can always go back to where you started.

Condition: One side of the deck lid is too low or high in the opening as measured at the quarter panel, the deck lid is flush at the tail lamp area and the other side is sub-flush to the quarter panel (gap -2.0 to + 2.0 mm).

The deck flush fit on one side is good, the flush gap at both tail lamps is good but the deck is high/low at the front (with buttress in place)



If the deck lid to quarter is flush on one side and high/low on the other side, you can finesse the fit by using a 1x4x3.5 long piece of wood wrapped in something soft to not scratch the paint.

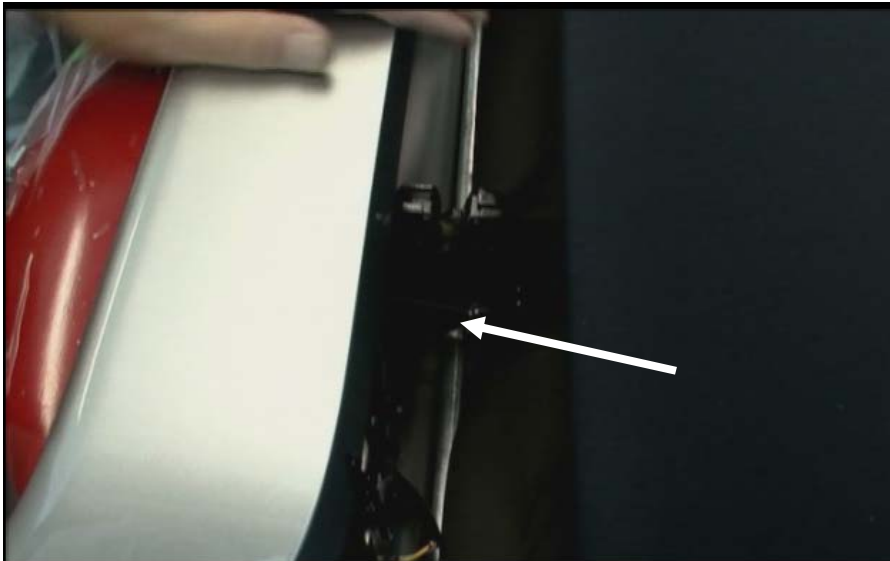
If this is the low side, place the block in the area between the weatherstrip and the quarter panel, lower the deck lid then on the opposite side, apply slight pressure.



Apply slight downward pressure to finesse the panel fit



The last deck lid flushness adjustment is the deck lid latch. You want the deck lid 1 mm lower than the body at this point



Condition: Tail lamp to deck lid not flush (gap 1.0 mm) or the gap between the deck and lamp is tight or excessive.

In this picture the gap between the tail lamp and deck lid is too tight. The tail lamp is also too low (sub-flush) to the deck lid.



To raise the lamp to become flush (1.0 mm) to the deck lid, remove the mounting screw's and place a coated body washer under the lamp to shim the lamp up.



To adjust the lamp to deck lid gap, loosen the attaching screws and pull on the lamp while tightening the screws. You can move the lamp a few mm's either way.



Condition: Rear Fascia flushness is high or low to the deck lid

REMEMBER: Before any adjustments to the deck or rear fascia, make sure the deck lid is flush to the quarter (1.0 mm) at the tail lamp area.

This fascia is 2 mm too low to the deck lid. We will raise the fascia to the deck lid height.



For minor adjustments - Loosen the rear fascia studs wherever the fascia needs adjusting. Using a trim stick or a covered screw driver, adjust the fascia up if low or down if too high while tightening the studs.



NOTE: You may need to loosen more than one or two studs to spread the load across the rear fascia. When you raise or lower the fascia, the fascia to deck lid gap will increase or decrease. Moving the fascia up increases the gap, lowering the fascia tightens the gap

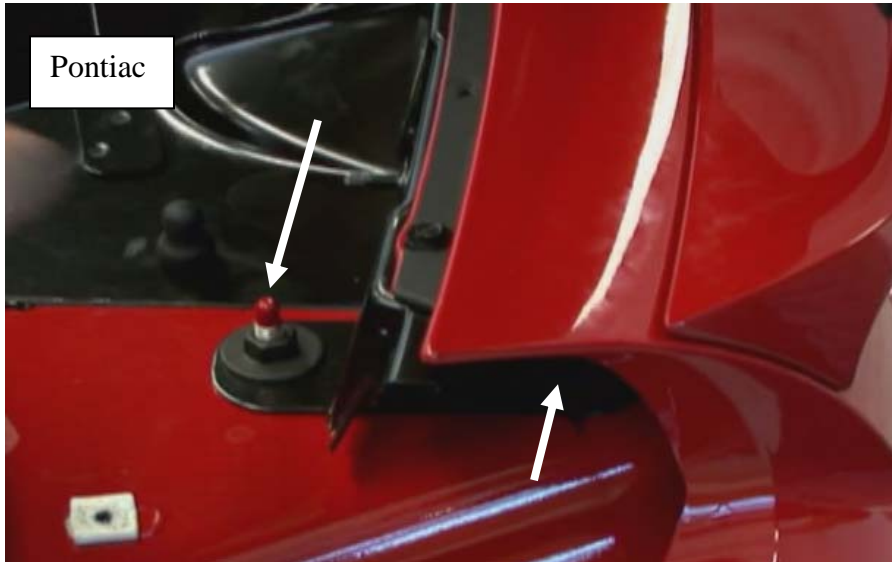
Moving this fascia up increased the gap to the deck lid.



Minor adjustments to move the fascia in or out can be accomplished by loosening the 7 mm fascia screws then move the fascia in or out to set the gap. The painted surface of the fascia mounting bracket will give you an indication of how much you can move the fascia in.



For major fascia adjustments (more than a few mm's) you will need to remove the tail lamp and loosen the fascia brackets then move the fascia in or out as needed.



Condition: Pontiac Rear Fascia to tail lamp fit – Slight dip in fascia at tail lamp

Loosen the fascia studs then using a trim stick, pry up on the fascia mounting bracket while tightening the studs



Loosen the fascia studs then using a trim stick or covered screw driver, pry up on the fascia mounting bracket while tightening the studs



Saturn

Condition: Saturn rear fascia to deck lid adjustments

Just like the Pontiac, the starting point is checking the deck to quarter fit at the tail lamp area

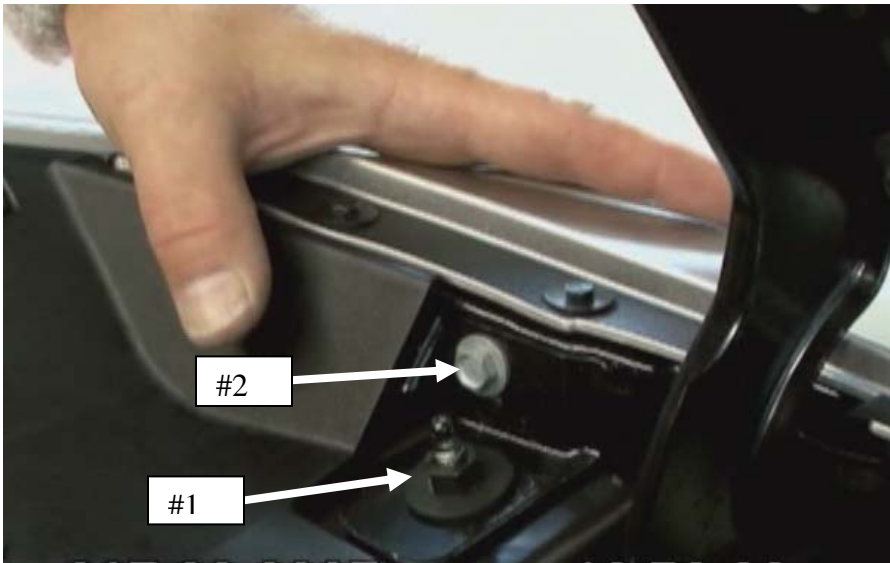


Raising the deck lid a minor amount can be done just like the Pontiac. Loosen the fascia studs and raise or lower the fascia while tightening the studs



Loosen the nut (#1) on the bracket. Move the bracket in or out to adjust the gap. Remember moving the rear fascia will also raise or lower the deck to fascia flushness. Loosening the fascia bolt #2 will allow you to move the fascia up or down

If the deck to fascia is flush, try making the in or out adjustments at the 7 mm screws.



NOTE: When removing Saturn tail lamps you must use caution so you do not damage the lamp.

Remove the tail lamp mounting screws then insert a trim stick under the center of the lamp then lift and rock the lamp to remove it from the mounting retainers. The lamps are very fragile in the corners and will crack if care is not taken during removal or installation



Condition: Saturn or Pontiac front of deck lid to quarter not flush (buttress latched)

The deck lid should be set sub flush (-2.0 to +2.0 mm) with the buttress latched.



The deck lid bumpers were added to both cars in late 07. Minor adjustments can be made with a simple bumper adjustment.



Hood Measurements

Just like the deck lid adjustments, the hood also has starting points. The first measurement for flushness is at the hood to the top of the door



Before any hood adjustments are made, you need to look at the hood to door and hood to fender fits.



Condition: The hood sits higher or lower than the top of the door

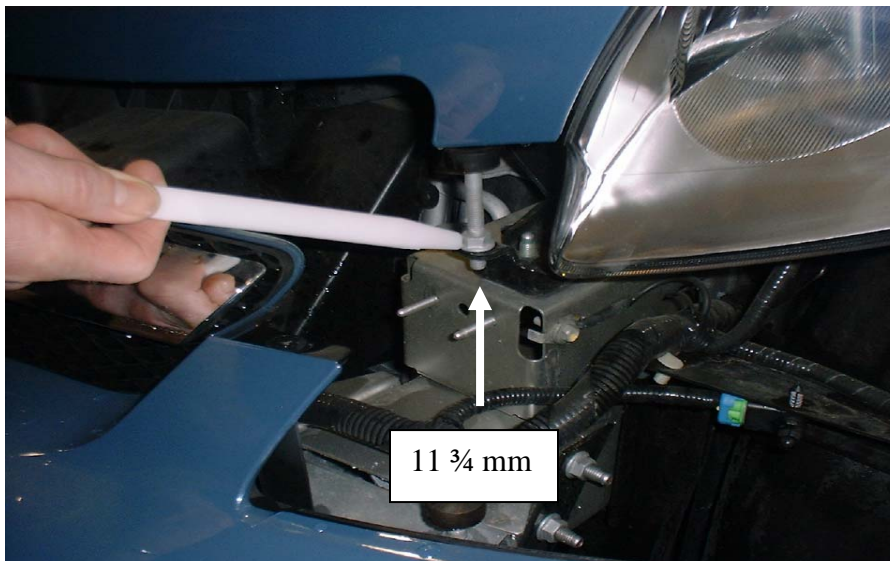
The first adjustment is the hood bumper. Move it in or out depending on the fit



If the bumper adjustment isn't enough, you may need to adjust the front hood stop. Raising the stop will close the gap and lowering the stop will increase the gap.

These adjustments will also have an effect on the hood to front fascia gaps and the hood to door gap

A good starting point for the hood stop adjustment is 11 $\frac{3}{4}$ mm from bottom side of bracket to bottom of stud



Condition: The hood to door gap is excessive or tight as measured at the middle of the door (gap parallel < 2.0 mm and min of 3.5 mm)

This gap is adjusted by the hood bumper or the front hood stop. Measure the gap half way between the top of the door and the top of the fender.



Condition: The hood to fender gap is excessive or tight

Loosen the attaching screws and the two 13 mm bolts at the lower part of the fender to make any adjustments



Fascia to Hood Adjustments

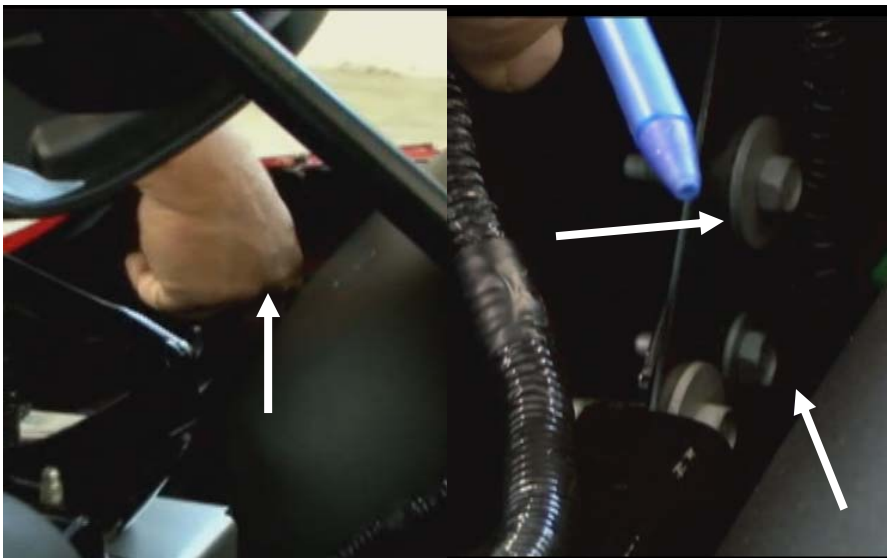
Condition: The hood to fascia gap is not equal from side to side (never less than 3 mm)



There are two different adjustments you can try for this condition.

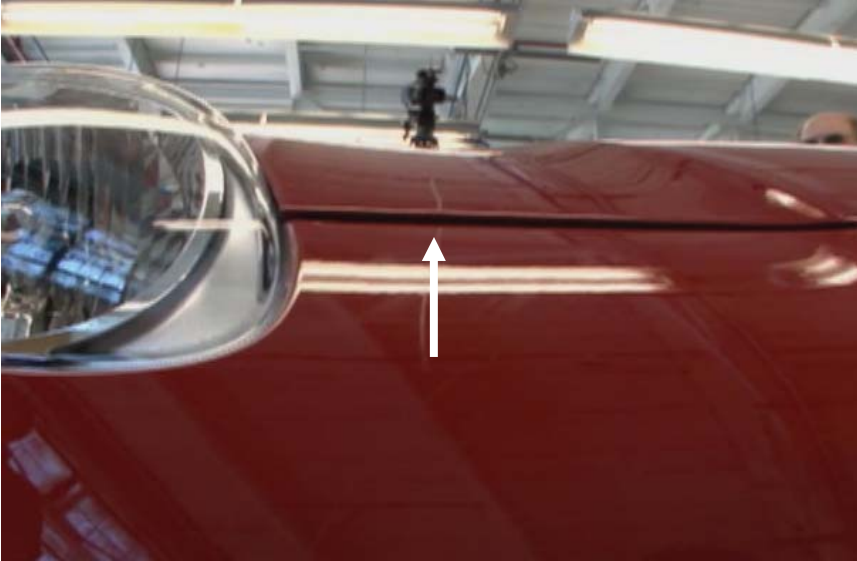
Adjust the hood stop up or down as needed. Remember, this adjustment will affect the hood to top of door to fender gaps.

The other adjustment is the fascia mounting bracket in the corner of the front fascia. Loosen the mounting bolts and move the fascia up or down as needed



Condition: The hood to fascia gap is good side to side but low or high between the head lamps

Hood to top of door and fenders are OK but the fascia is low



Loosen the inside fascia bracket bolts and lift up or down as needed.



Fascia to Hood Fit by Head Lamp and in Front of Tire

Condition: *The fascia is sticking out at the hood in the head lamp area*

If the front fascia is sticking out farther than the hood at the head lamp area, in front of the tire, and the rest of the hood to door to fender fit's are OK.



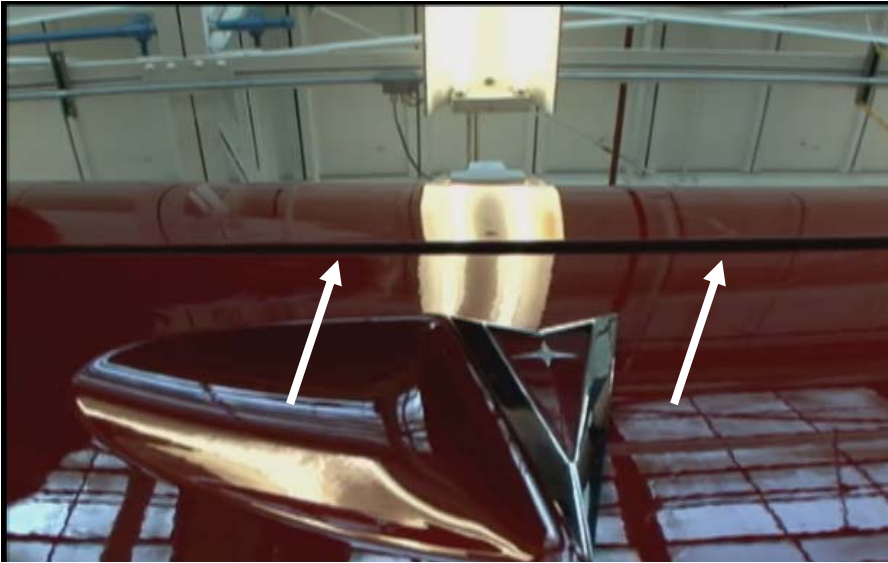
A simple adjustment is made by loosening the 7 mm attaching screws, apply pressure to the fascia in the direction you need to the fascia to go then will pressure on the fascia, tighten the 7 mm screws.



Front Fender Adjustment – Pontiac

Condition: *The front fender is not flush at the hood*

This adjustment is only possible with the Pontiac because the fender is metal.



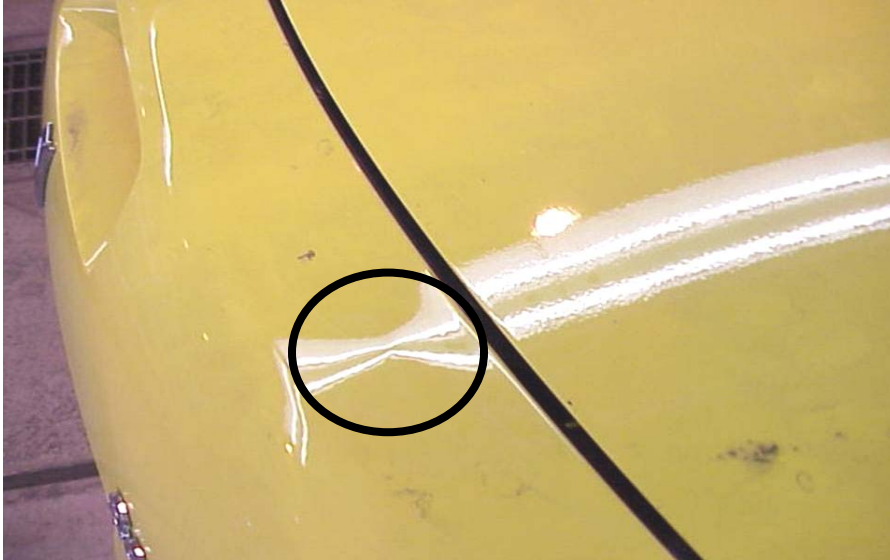
Loosen the top 7 mm screws (center and front or rear but not all three), pull out or push in at the center of the fender then tighten the center screw first



Rear Fascia Ding in Fascia from Inside Out

Condition: *The rear fascia has up-dings from the inside out*

This condition is caused by the over extending the deck lid when opening



Replace both hinges. The fascia will relax after the pressure from the hinge is gone.

This is not a warranty repair

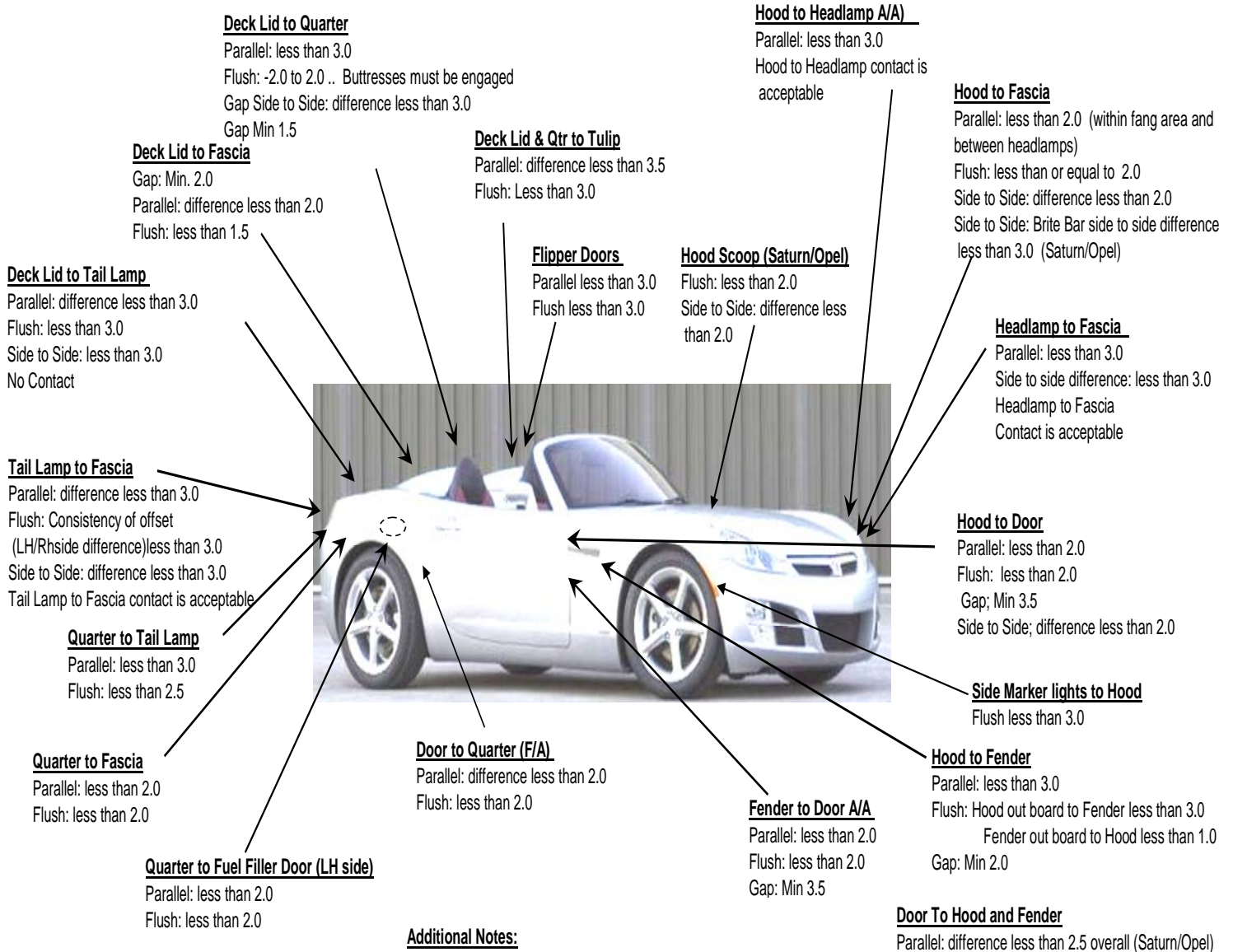


Normal
Hinge

Over Extended
Hinge

Gap & Flushness Specifications

All specifications are in millimeters



Additional Notes:

- No Metal to Metal Contact
- Head Lamp Contact to Hood or Fascia is Acceptable
- Tail Lamp to Fascia Contact is Acceptable
- Close decklid at the driver's side only prior to verifying fits
- Deck lid to quarter flushness must be measured with the buttresses engaged.

***Close decklid at the driver's side only prior to verifying gap

Effective Date:	1/29/08
-----------------	---------